

STATISTICAL SUMMARY 2019 FISCAL YEAR



**NEVADA DISABILITY
ADVOCACY & LAW CENTER**



***Nevada's Protection and Advocacy System for
Individuals with Disabilities***

NDALC provides protection, advocacy, information and referral, and legal services under funding provided by our **FEDERAL PARTNERS:**

U.S. Department of Health and Human Services, Substance Abuse and Mental Health Services Administration (SAMHSA)

PAIMI – serves individuals with mental illness

U.S. Department of Health and Human Services, Administration for Community Living (ACL)

PADD – serves individuals with intellectual and developmental disabilities

PAVA – serves individuals with disabilities regarding their voting rights and access

PAAT – serves individuals with disabilities who need assistive technology devices or services

PATBI – serves individuals with traumatic brain injuries

U.S. Department of Education, Office of Special Education and Rehabilitation Services (OSERS)

PAIR – serves individuals with disabilities not covered under other P&A programs

CAP – serves individuals with disabilities applying for or receiving services under the federal Rehabilitation Act

Social Security Administration, Office of Acquisition and Grants (OAG)

PABSS – serves beneficiaries of Social Security Income (SSI), or Social Security Disability Insurance (SSDI) under the Ticket to Work and Work Incentives Improvement Act (TWWIIA) and offers assistance with the removal of barriers preventing them from returning to work.

WIPA – serves beneficiaries of Social Security and offers work incentives and planning assistance under the Ticket to Work and Work Incentives Improvement Act (TWWIIA)

PABRP – reviews are conducted of representative payees under Social Security Administration programs to confirm responsibilities are appropriately carried out on behalf of the beneficiary.

Funding by Yearly Award Allotment - FY19

PAIMI	\$428,000.00	25%
PADD	\$404,556.00	23%
PAVA	\$98,209.00	6%
PAAT	\$50,000.00	3%
PATBI	\$50,000.00	3%
PAIR	\$171,598.00	10%
CAP	\$131,917.00	8%
PABSS	\$100,000.00	6%
WIPA	\$120,500.00	7%
PABRP	\$177,897.00	10%
	\$1,732,677.00	100%



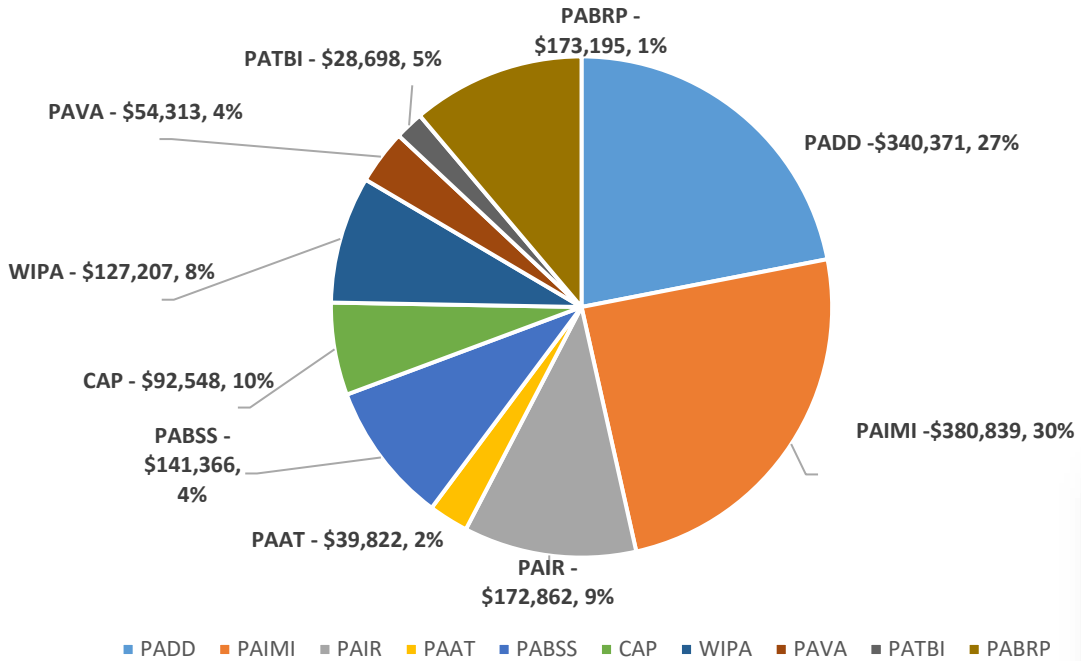
**NEVADA DISABILITY
ADVOCACY & LAW CENTER**

This publication was made possible by funding support from the above Federal agencies.

The contents are solely the responsibility of NDALC and have not been reviewed or endorsed by the federal government, nor does it constitute an official document under any of the above agencies.

The publication was developed and printed at U.S. taxpayer expense.

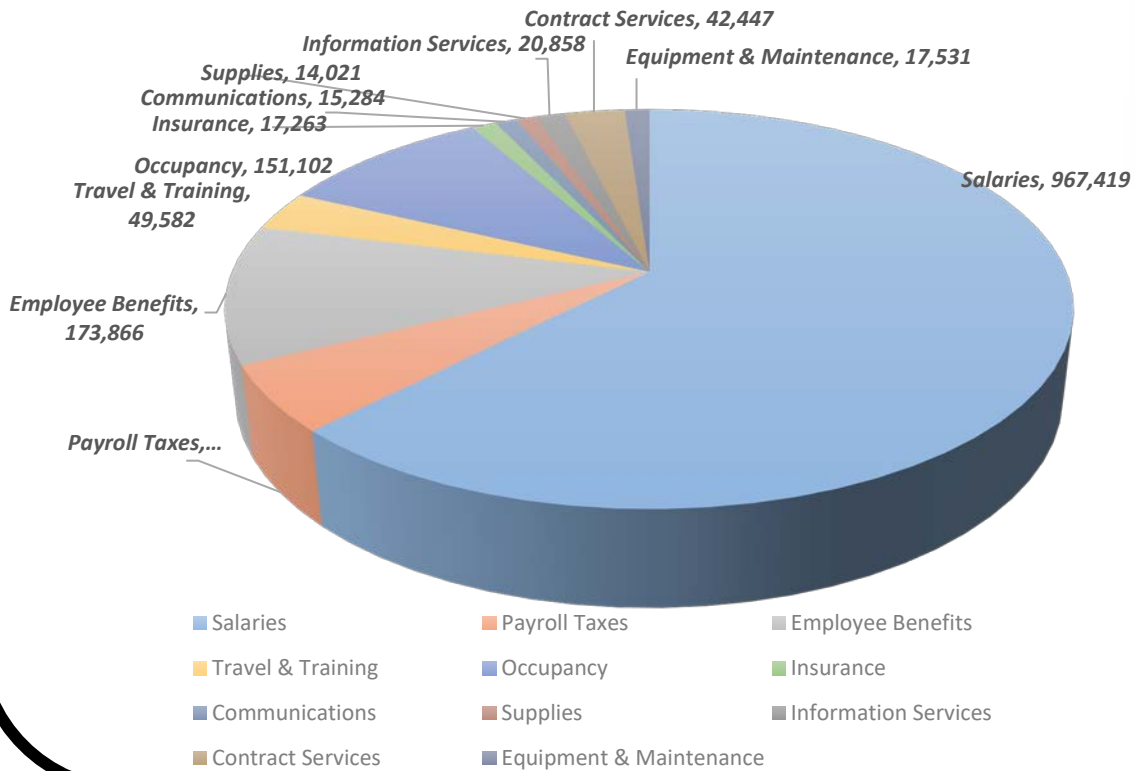
FY19 - Grant Funds Received - \$1,551,221



NEVADA DISABILITY
ADVOCACY & LAW CENTER



FY19 DISBURSEMENTS TOTALING \$1,551,697



TOTAL CLIENTS 1503**TOTAL SERVICE REQUESTS 1887****CLIENTS - P&A Programs 1409 SERVICE REQUESTS - P&A Programs 1542***Clients Self-Identify for Ethnicity & Disability*

GENDER	%	Clients	S/R	PRIMARY DISABILITY	%	Clients	S/R
Male	56%	788	865	Absence of Extremities	0.5%	7	8
Female	44%	621	677	ADD/ADHD	1.4%	20	21
		1409	1542	AIDS/HIV	0.6%	9	10
AGE	%	Clients	S/R	Arthritis	0.1%	2	2
0-5	3%	36	37	Autism Spectrum Disorder	9.3%	131	142
6-11	6%	88	99	Autoimmune Disease	0.4%	6	6
12-18	8%	116	126	Blindness (both eyes)	1.5%	21	24
19-25	8%	111	115	Cancer	1.1%	16	18
26-35	11%	161	179	Cerebral Palsy	1.8%	25	27
36-45	14%	197	222	Deafness	1.8%	25	27
46-55	19%	271	303	Diabetes	1.1%	15	15
56-65	17%	241	267	Digestive Disorders	0.4%	6	6
66-75	7%	92	96	Down Syndrome	0.1%	1	2
76+	2%	29	30	Epilepsy	0.6%	9	9
Unknown	5%	67	68	Genitourinary Conditions	0.4%	6	7
		1409	1542	Hard of Hearing (not deaf)	1.1%	16	20
ETHNICITY		Clients	S/R	Heart & Other Circulatory Conditions	2.9%	41	41
American Indian / Alaskan Native		14	15	Intellectual Disabilities	6.5%	91	105
Asian		37	40	Learning Disabilities	0.6%	8	8
Asian (H/L)*		0	0	Mental Illness	34.6%	488	540
Black		241	265	Multiple Sclerosis	0.9%	13	14
Black (H/L)*		4	5	Muscular Dystrophy	0.1%	2	2
Hispanic/Latino		101	109	Muscular/Skeletal Impairment	1.1%	16	17
Multiracial		56	57	Neurological Disorders	4.4%	62	65
Multiracial (H/L)*		162	180	Orthopedic/Physical Impairments	14.8%	209	230
Native Hawaiian / Other Pacific Islander		11	11	Other Emotional/Behavioral	0.5%	7	8
Not Stated		4	4	Respiratory Disorders	0.9%	12	12
Unknown		80	84	Specific Learning Disabilities (SLD)	1.8%	25	27
White		699	772	Speech Impairments	0.5%	7	7
		1409	1542	Spina Bifida	0.1%	2	2
				Tourettes	0.1%	1	2
				Traumatic Brain Injuries (TBI)	3.3%	46	47
				Visual Impairment (Not Blind)	1.9%	27	30
				Not Stated/Unknown	2.6%	37	41
REGION	%	Clients	S/R		100%	1409	1542
Northern	22%	305	326				
Southern	71%	995	1101				
Rural	6%	109	115				
		1409	1542				
Northern Counties:	Carson City, Douglas, Lyon, Storey, Washoe						
Southern Counties:	Clark, Lincoln, Nye						
Rural Counties:	Churchill, Elko, Esmeralda, Eureka, Humboldt, Lander, Mineral, Out of State, Pershing, White						


**NEVADA DISABILITY
ADVOCACY & LAW CENTER**
CLIENTS - WIPA 94 SERVICE REQUESTS - WIPA 345

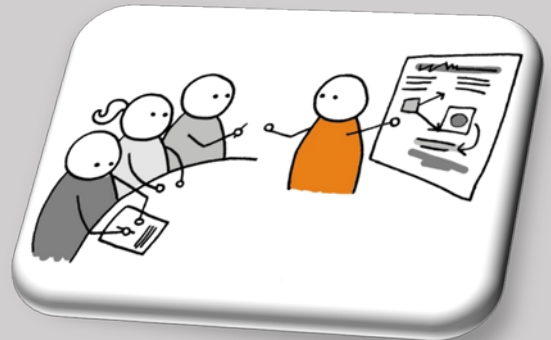
WIPA is the Work Incentives Planning Program that has different process and criteria than the above P&A programs.

RepPayee (PABRP) is NOT included in any of the above numbers - completely different service provision

Fiscal Year Meeting and Educational Impact

97 Events:

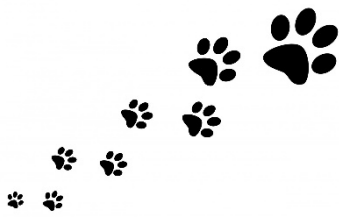
30 Educational Trainings
61 In-Service/Outreaches
6 Public/Community Functions



Attendees/Recipients – 16,049

Brochures/Training Materials Released – 2,859

Specialized Materials e.g., Posters - 290



Our 'Furry' Service Professionals



Forever



Butters



Carolina



**NEVADA DISABILITY
ADVOCACY & LAW CENTER**

Locations

SOUTHERN OFFICE

2820 W. Charleston,
Suite B-11
Las Vegas, NV 89102
Phone: 702-257-8150
Toll Free: 1-888-349-3843
Nevada Relay: 711
Fax: 702-257-8170
lasvegas@ndalc.org
Se Habla Español

NORTHERN OFFICE

1875 Plumas Street,
Suite 1
Reno, NV 89509
Phone: 775-333-7878
Toll Free: 1-800-992-5715
Nevada Relay: 711
Fax: 775-786-2520
reno@ndalc.org
Se Habla Español

ELKO OFFICE

905 Railroad Street,
Suite 104B
Elko, NV 89801
Phone: 775-777-1590
Toll Free: 1-800-992-5715
Nevada Relay: 711
Fax: 775-753-1690
elko@ndalc.org

www.NDALC.org